

## Thrust Spherical Roller Bearings

Thrust spherical roller bearings are with reinforced optimized design, with can bear combined axial and radial loads but mainly axial load.

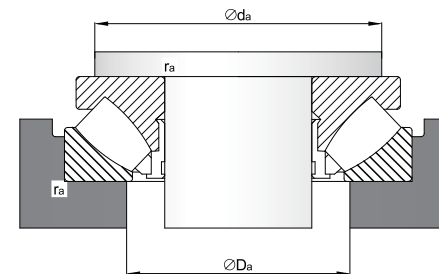
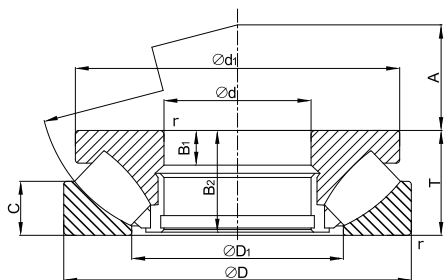
The spherical raceway center of the seat washer is in line with the bearing center.

The rollers adopt asymmetric spherical design, which can reduce the relative sliding between the rollers and the raceway during operation. The rollers are arranged in spherical shape, with automatic self-aligning function, contact angle of approx. 45 degree.

Thrust spherical roller bearings are suitable for large mechanical equipment with high speed.



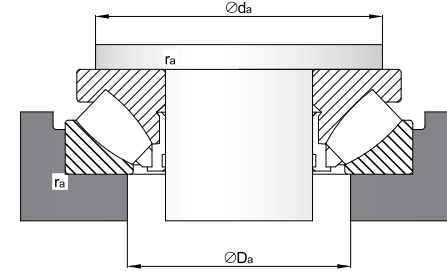
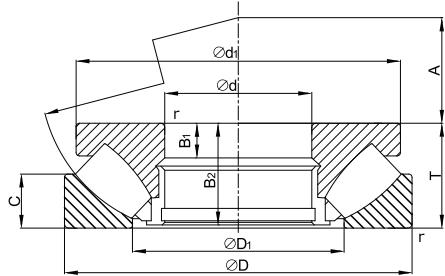
d: 60 ~ 190 mm



Principal Dimensions (mm)				Bearing Designations	Basic Load Ratings (N)		Limiting Speed (rpm)		Bearing Designations						Abutment and Fillet Dimensions			Weight (kg)
d	D	T	r (min)		Dynamic Cr	Static Cor			d <sub>1</sub>	D <sub>1</sub>	B <sub>1</sub>	B <sub>2</sub>	C	A	d <sub>a</sub> (min)	D <sub>a</sub> (mix)	r <sub>a</sub> (mix)	
60	130	42	1.5	29412	299000	890000	2800		123	89	15	39.5	20	38	91	108	1.5	2.75
65	140	45	2	29413	345000	1040000	2700		133	96	16	42.5	21	42	99	115	2	3.41
70	150	48	2	29414	375000	1110000	2400		142	103	17	45.5	23	44	106	125	2	4.16
75	160	51	2	29415	445000	1380000	2300		152	109	18	48	24	47	113	132	2	4.98
80	170	54	2.1	29416	480000	1490000	2100		162	117	19	51	26	50	120	140	2	5.95
85	150	39	1.5	29317	293000	990000	2700		143.5	114	13	37	19	50	115	135	1.5	2.87
	180	58	2.1	29417	540000	1720000	2000		170	125	21	55	28	54	130	150	2	7.19
90	155	39	1.5	29318	300000	1040000	2700		148.5	117	13	37	19	52	120	140	1.5	3.06
	190	60	2.1	29418	620000	2020000	1900		180	132	22	57	29	56	135	157	2	8.28
100	170	42	1.5	29320	355000	1260000	2500		163	129	14	40	20.8	58	130	150	1.5	3.91
	210	67	3	29420	690000	2230000	1700		200	146	24	64	32	62	150	175	2.5	11.2
110	190	48	2	29322	470000	1680000	2100		182	143	16	45.5	23	64	145	165	2	5.67
	230	73	3	29422	845000	2820000	1500		220	162	26	69	35	69	165	190	2.5	14.7
120	210	54	2.1	29324	565000	2030000	1900		200	159	18	51	26	70	160	180	2	7.9
	250	78	4	29424	1030000	3450000	1400		236	174	29	74	37	74	180	205	3	18.5
130	225	58	2.1	29326	665000	2420000	1800		215	171	19	55	28	76	170	195	2	9.45
	270	85	4	29426	1140000	3850000	1200		255	189	31	81	41	81	195	225	3	23.5
140	240	60	2.1	29328	700000	2560000	1600		230	183	20	57	29	82	185	205	2	11.2
	280	85	4	29428	1200000	4050000	1200		268	199	31	81	41	86	205	235	3	24.6
150	215	39	1.5	29230	335000	1390000	2100		208	178	14	37	19	82	179	196	1.5	4.60
	250	60	2.1	29330	735000	2840000	1600		240	194	20	57	29	87	195	215	2	11.7
160	300	90	4	29430	1330000	4600000	1100		285	214	32	86	44	92	220	250	3	29.6
	225	39	1.5	29232	345000	1470000	2100		219	188	14	37	19	85	189	206	1.5	4.70
170	270	67	3	29332	880000	3400000	1400		260	208	23	64	32	92	210	235	2.5	15.5
	320	95	5	29432	1510000	5350000	1000		306	229	34	91	45	99	230	265	4	35.9
180	240	42	1.5	29234	390000	1700000	1900		233	198	15	40	20	92	201	218	1.5	6.00
	280	67	3	29334	900000	3550000	1400		270	216	23	64	32	96	220	245	2.5	16.3
190	340	103	5	29434	1670000	5900000	950		324	243	37	99	50	104	245	285	4	44.0
	250	42	1.5	29236	420000	1900000	1900		243	208	15	40	21	95	211	228	1.5	6.30
180	300	73	3	29336	1020000	3950000	1300		290	232	25	69	35	103	235	260	2.5	20.7
	360	109	5	29436	1950000	7000000	860		342	255	39	105	52	110	260	300	4	52.2
190	270	48	2	29238	540000	2300000	1800		262	223	15	45	24	104	225	245	2	8.50
	320	78	4	29338	1170000	4550000	1100		308	246	27	74	38	110	250	275	3	25.5
190	380	115	5	29438	2120000	7750000	800		360	271	41	111	55	117	275	320	4	61.4

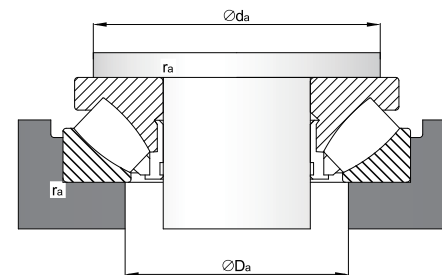
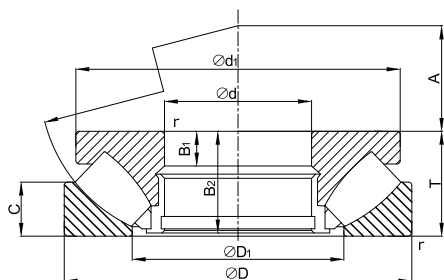


d: 200 ~ 420 mm



Principal Dimensions (mm)				Bearing Designations	Basic Load Ratings (N)		Limiting Speed (rpm)	Bearing Designations							Abutment and Fillet Dimensions			Weight (kg)
d	D	T	r (min)		Dynamic Cr	Static Cor		d1	D1	B1	B2	C	A	da (min)	Da (mix)	ra (mix)		
200	280	48	2	<b>29240</b>	550000	2410000	1800	271	236	15	45	24	108	235	255	2	9.08	
	340	85	4	<b>29340</b>	1350000	5250000	1000	325	261	29	81	41	116	265	295	3	32	
	400	122	5	<b>29440</b>	2350000	8450000	740	380	286	43	117	59	122	290	335	4	73	
220	300	48	2	<b>29244</b>	595000	2750000	1600	292	254	15	45	24	117	260	275	2	9.84	
	360	85	4	<b>29344</b>	1410000	5750000	1000	345	280	29	81	41	125	285	315	3	34.5	
	420	122	6	<b>29444</b>	2410000	8950000	720	400	308	43	117	58	132	310	355	5	74.2	
240	340	60	2.1	<b>29248</b>	890000	4000000	1300	330	283	19	57	30	130	285	305	2	17.1	
	380	85	4	<b>29348</b>	1410000	5850000	980	365	300	29	81	41	135	300	330	3	36.3	
	440	122	6	<b>29448</b>	2480000	9450000	720	420	326	43	117	59	142	330	375	5	83	
260	360	60	2.1	<b>29252</b>	915000	4250000	1300	350	302	19	57	30	139	305	325	2	18.5	
	420	95	5	<b>29352</b>	1810000	7500000	860	405	329	32	91	45	148	330	365	4	51.5	
	480	132	6	<b>29452</b>	2940000	11600000	640	460	357	48	127	64	154	360	405	5	106	
280	380	60	2.1	<b>29256</b>	935000	4500000	1200	370	323	19	57	30	150	325	345	2	19.5	
	440	95	5	<b>29356</b>	1850000	7950000	840	423	348	32	91	46	158	350	390	4	54	
	520	145	6	<b>29456</b>	3450000	13500000	580	495	387	52	140	68	166	390	440	5	137	
300	420	73	3	<b>29260</b>	1220000	5850000	1000	405	353	21	69	38	162	355	380	2.5	31	
	480	109	5	<b>29360</b>	2310000	10000000	720	460	379	37	105	50	168	380	420	4	75.4	
	540	145	6	<b>29460</b>	3650000	14800000	540	515	402	52	140	70	175	410	460	5	146	
320	440	73	3	<b>29264</b>	1270000	6150000	980	430	372	21	69	38	172	375	400	2.5	32.8	
	500	109	5	<b>29364</b>	2370000	10600000	720	482	399	37	105	53	180	400	440	4	80	
	580	155	7.5	<b>29464</b>	4050000	16800000	480	555	435	55	149	75	191	435	495	6	179	
340	460	73	3	<b>29268</b>	1290000	6350000	950	445	395	21	69	37	183	395	420	2.5	34.5	
	540	122	5	<b>29368</b>	2850000	12400000	630	520	428	41	117	59	192	430	470	4	106	
	620	170	7.5	<b>29468</b>	4750000	19300000	430	590	462	61	164	82	201	465	530	6	228	
360	500	85	4	<b>29272</b>	1650000	8050000	830	485	423	25	81	44	194	420	455	3	50.4	
	560	122	5	<b>29372</b>	2900000	12900000	600	540	448	41	117	59	202	450	495	4	111	
	640	170	7.5	<b>29472</b>	4900000	20500000	410	610	480	61	164	82	210	485	550	6	234	
380	520	85	4	<b>29276</b>	1780000	8800000	800	505	441	27	81	42	202	440	475	3	52.8	
	600	132	6	<b>29376</b>	3400000	15300000	540	580	477	44	127	63	216	480	525	5	140	
	670	175	7.5	<b>29476</b>	5200000	22000000	400	640	504	63	168	85	230	510	575	6	263	
400	540	85	4	<b>29280</b>	1840000	9250000	800	526	460	27	81	42	212	460	490	3	55.1	
	620	132	6	<b>29380</b>	3550000	16300000	530	596	494	44	127	64	225	500	550	5	146	
	710	185	7.5	<b>29480</b>	5850000	25000000	360	680	534	67	178	89	236	540	610	6	314	
420	580	95	5	<b>29284</b>	2260000	11300000	700	564	489	30	91	46	225	490	525	4	74.9	

d: 420 ~ 530 mm



Principal Dimensions (mm)				Bearing Designations	Basic Load Ratings (N)		Limiting Speed (rpm)			Bearing Designations						Abutment and Fillet Dimensions			Weight (kg)
d	D	T	r (min)		Dynamic Cr	Static Cor				$d_1$	$D_1$	$B_1$	$B_2$	C	A	$d_a$ (min)	$D_a$ (mix)	$r_a$ (mix)	
420	650	140	6	<b>29384</b>	3900000	17900000	480			626	520	48	135	68	235	525	575	5	170
	730	185	7.5	<b>29484</b>	6050000	26000000	360			700	556	67	178	89	244	560	630	6	325
440	600	95	5	<b>29288</b>	2290000	11800000	660			585	508	30	91	49	235	510	545	4	79
	680	145	6	<b>29388</b>	4050000	19000000	450			655	548	49	140	70	245	550	600	5	192
460	780	206	9.5	<b>29488</b>	6950000	30000000	300			745	588	74	199	100	260	595	670	8	421
	620	95	5	<b>29292</b>	2290000	11900000	660			605	530	30	91	46	245	530	570	4	80.9
480	710	150	6	<b>29392</b>	4600000	21700000	430			685	567	51	144	72	257	575	630	5	216
	800	206	9.5	<b>29492</b>	7150000	31500000	290			765	608	74	199	100	272	615	690	8	435
500	650	103	5	<b>29296</b>	2530000	13200000	600			635	556	33	99	55	259	555	595	4	97.5
	730	150	6	<b>29396</b>	4630000	21900000	410			705	590	51	144	72	270	595	650	5	224
530	850	224	9.5	<b>29496</b>	8250000	36000000	260			810	638	81	216	108	280	645	730	8	543
	670	103	5	<b>292/500</b>	2590000	13800000	600			654	574	33	99	55	268	575	615	4	101
500	750	150	6	<b>293/500</b>	4700000	22600000	410			725	611	51	144	74	280	615	670	5	231
	870	224	9.5	<b>294/500</b>	8250000	35000000	250			830	661	81	216	107	290	670	750	8	559
530	710	109	5	<b>292/530</b>	2820000	15100000	540			692	612	35	105	57	288	615	653	4	106



